

TINY SEED & MICROSCOPIC YEAST
Matthew 13:31–33, Mark 4:30–32, Luke 13:18–21

Jack Napier
6/4/2023

What's True in the Bible?

How will the Kingdom expand?

1. The Mustard Seed: _____
Matthew 13:31–32 / Mark 4:30–32 / Luke 13:18–19

2. The Leaven: _____
Matthew 13:33 / Luke 13:20–21

What's Real in my life?

- Icebreaker: What plant would best represent my personality? Explain.
- How are the two parables similar? Different?
- How can the parables be interpreted as warnings?
- What encouragement or assurance do the parables give me now?

What's Next for me?

-

Grace Community

June 4, 2023



*Love God, Love people, and Lead
others to do the same.*



 gccnewton.com

 GraceCommunityChurchNewton

 gccnewton

 info@gccnewton.com

 316.283.2554

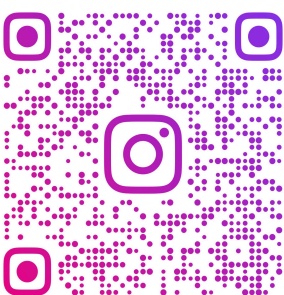
Welcome to Grace

Hello! We are so glad you're joining us this morning! We have a strong desire to know and experience God's love. It is His love for us which, in turn, inspires us to love God, love people, and lead others to do the same.

If you're a guest with us, we would love to hear from you! Go to gccnewton.com and click the blue button that says **Connect With Us** and tell us how we can serve you or pray for you. We would love to have you join us every Sunday at 9:00am or 10:45am!

If you have any questions or want more information about who we are and what we do, please take some time to browse our website at gccnewton.com or visit the connection desk in the foyer.

Connect With Us



INSTAGRAM

Stay connected with all things Grace related! We post spiritual encouragement, church updates, and the occasional dad joke; and who doesn't like a good dad joke?

Next step: Follow us on Instagram at [gccnewton](http://gccnewton.com) or scan the QR code to the left.

ELDERS

Paul Friesen, Jack Napier, Jeff Quandt, Kyle Schanbacher, Doug Stucky, Denver Sweazy

Next Steps with Grace

Join Our Church Family!

Becoming a member at Grace means you identify with our purpose and you commit to sharing in our responsibility and ministry.

Next step: Visit gccnewton.com/membership to read more information and complete an application

Giving to the Lord

We believe that regular giving to the local church is an essential act of worship in response to God's generosity and provision for us. You can give at gccnewton.com/give, in the Church Center app, or at one of the baskets by the exits of the Worship Center.

Fiscal Year as of April 30

Income: \$388,479
Expense: \$349,439
Budget: \$375,755

Attendance from May 28

538

Growing with Grace



Starting Tomorrow | 7 - 8:30pm | Fireside Room

Does the world seem to be falling apart? Will the evil we see ever stop? Does God even have a plan for all this? Are there lots of verses in the Bible about the future you don't understand? If these questions are your questions, there is a Bible study happening this summer you might like to be a part of.

Next step: Sign up at gccnewton.com/upcoming-events



June 4 - July 30 | 9am | Deck Room

We believe that everyone needs a biblical worldview, especially the next generation. "Proof" is a class, designed for 1st through 6th graders, about creation through a biblical worldview lens. "This class aims to look at the question: Does nature give proof of God?"

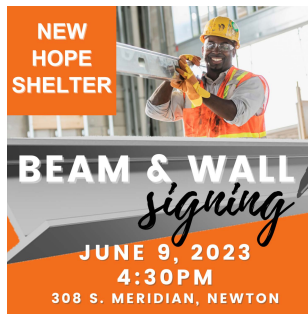
Next step: Bring your 1st - 6th grader!



During Both Services | C304/C306

Kids ages 3 years old through Kindergarten can attend Kids Church during the service. The children will attend Worship with their parents -during either service- and be dismissed for Kids Church.

Next step: Parents, please register your child ahead of time at gccnewton.com/upcoming-events. If you have not registered, please make sure to go with your child the first time they are attending to get checked in!



June 9 | 4:30pm | 308 S Meridian

The New Hope Shelter is having a beam and wall signing at their new building! Bring your family and a sharpie and come celebrate with us what God is doing!

Next step: Enjoy some ice cream and sign your name, a prayer, or Bible verse. (Please note this is a construction zone, please use caution and watch children at all times!)

For More Information

There are many opportunities for you to get connected and involved here at Grace! For more details, take some time to browse gccnewton.com. We especially recommend checking out the **Upcoming Events** page!